

JAURE®



MARINE DRIVES

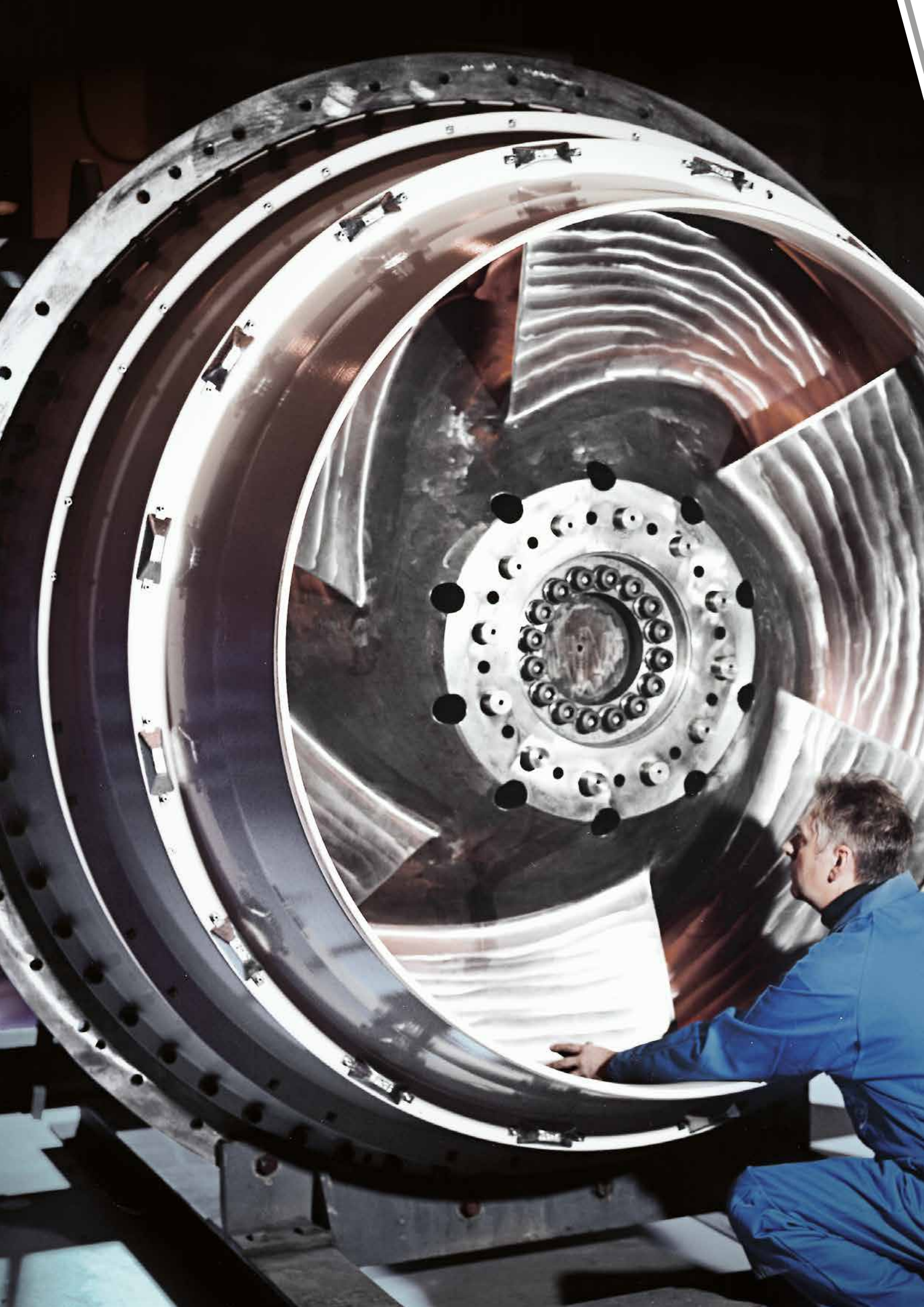
REGAL®





MOVING YOUR BUSINESS FORWARD.

For over 50 years, we have been on the move as a leading supplier of couplings. Jaure® couplings provide tailored solutions that bring innovation to your applications.



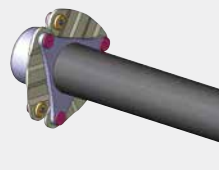
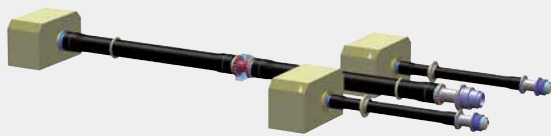
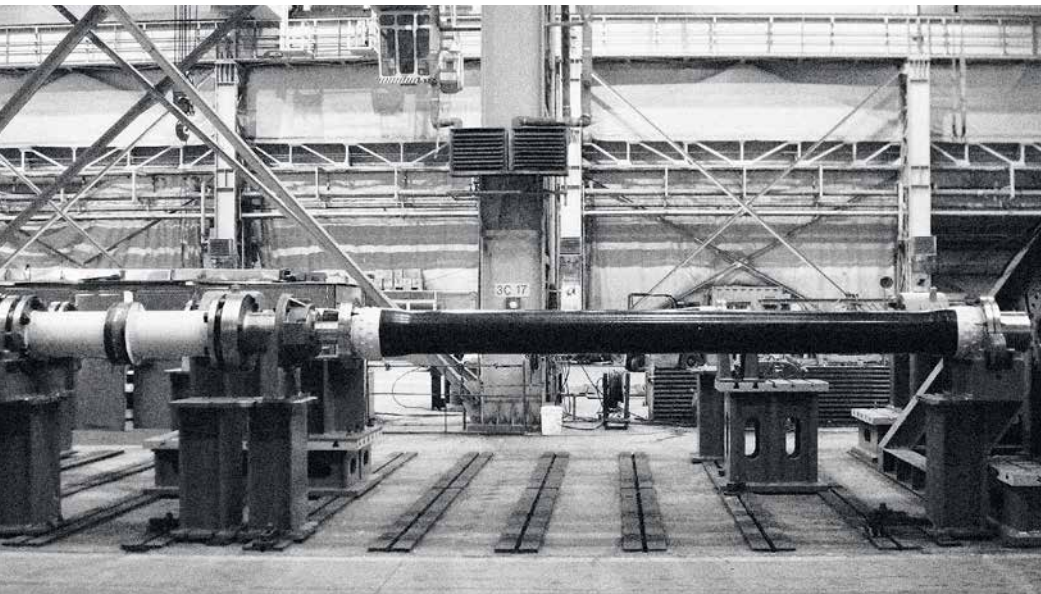
CLASS APPROVED PACKAGED SOLUTIONS FOR YOUR MARINE DRIVES.

The widest program for Jaure® flexible couplings is available. Thus we have the coupling for your application.

MT	Compact gear coupling for most marine applications including underwater.
LAMIDISC®	Non lubricated torsionally stiff disc pack coupling.
IXILFLEX®	Bidirectional rubber link coupling for high misalignment
COMPOLINK®	Composite link coupling for high misalignment and excellent service life.

But our customers in the maritime industry need solutions. Regal therefore decided many years ago not only to develop and produce flexible couplings but also to design and produce drive shafts both in steel and **JCFS composite**.

WATERJET



JAURE® COMPOSITE COUPLING

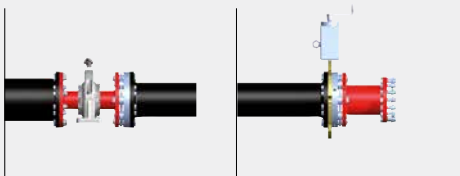
Highly flexible and corrosion free Compolink® coupling.

Waterjets are widely used today for many high speed vessels including navy, fast ferries, rescue or landing crafts, luxury yachts and patrol boats among others.

Many well known solutions based on Jaure flexible couplings and steel shaftlines have been delivered for years to conventional waterjet drives and are still on force.



Jaure light weight composite drives are combined with our flexible couplings and customized for each application.



JAURE® COMPOSITE DRIVES

JCFS shafts with bulkhead seal, intermediate bearing and locking device.

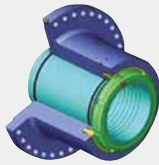
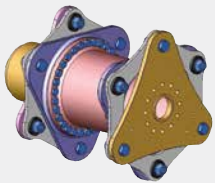


The demand for light weight solutions pushed our R+D Department to also develop JCFS Carbon Fiber Shafts.

Our drives meet the requirements of Classification Societies and are delivered with the official certificates.



PROPELLER



JAURE® DISC PACK & HYDRAULIC RIGID COUPLING

Maintenance free Lamidisc® and JHC shaft couplings.

Up to 30m length Jaure flexible shaft systems between main engine and gearbox are supplied by Regal for conventional propeller propulsion. Our marine engineers, in close cooperation with our customers, design custom-made shaft lines to meet the individual needs of each vessel.

Jaure flexible couplings (gear, disc and rubber link) together with rigid couplings, steel or composite tubes and other components allow us to provide engineered to order solutions.



THRUSTER



JAURE® RUBBER LINK COUPLING

Bidirectional Ixilflex® coupling for high misalignment.

We are one of the largest and most experienced manufacturer of couplings for thruster applications, both for propulsion and maneuvering. Thousands of Jaure flexible couplings have operated successfully on thrusters for decades.

No matter the type of thruster: tunnel, azimuth, retractable azimuth, swing up or any other special type, we have a customized solution, with products ranging from MT gear couplings, LAMIDISC® disc pack couplings and IXILFLEX® elastic couplings for vertical and horizontal drives.

Our customers will additionally take advantage of DNV type approvals both for the MT gear and LAMIDISC disc pack coupling.



DREDGER



JAURE® GEAR COUPLING

MT compact range for heavy duty.

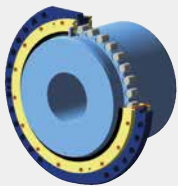


We have over 30 years of technical experience in supplying custom-made couplings for the dredging industry. Dredgepumps and jetpumps are driven by Jaure MT gear and LAMIDISC® disc pack couplings.

Our scope of supply includes couplings inside the machine room and couplings for outdoor installation and submerged configuration. Jaure® underwater couplings can be specially designed for long spans (steel and composite shafts available).



WINCHES & DECK MACHINERY



JAURE® BARREL COUPLING

Barflex® TCBR couplings range for cranes and hoisting.

Heavy duty couplings are the best choice for anchor handling and towing winches because of existing high peak torques.

For the toughest sea waters, we provide reliable MT gear and TCBR barrel couplings in heavy duty design and tailored to each specific winch.



JAURE[®] MANUFACTURING PROGRAM



PRODUCT BRAND NAME	MT	LAMIDISC [®]	LAMILINK	BARFLEX [®]	AL-S / AL-SD / ALD	IXILFLEX [®]
TYPE & DESCRIPTION	Gear	Disc pack	Metallic Link	Barrel (drum type)	Gear spindles	Elastic Link
INDUSTRY APPLICATION						
Metals & Heavy duty	•	•	•	•	•	
Minerals & Mills	•	•	•	•		
Crane & Hoisting	•	•	•	•		
Pulp & Paper	•	•	•			•
Petrochemical / Oil & Gas	•	•	•			
Cooling Towers		•	•			
Machine Tools		•	•			
Marine	•	•	•	•		•
Wind Turbines		•	•			•
Test Benches	•	•	•			•
Railway	•	•	•			•

COUPLINGS

						
COMPOLINK®	JAUFLEX®	RECORD	JCFS	JHC / JHC-HF	JFTL TORQUE LIMITER	JS NUT
Composite Link	Elastic	Grid / spring type	Composite Shafts	Hydraulic fit (shaft couplings)	Torque Limiter	Tensioner
	•	•		•	•	•
	•	•		•	•	•
	•	•			•	•
•	•	•	•			•
•	•	•	•			•
•			•			•
•	•		•			•
•	•		•	•	•	•
•	•	•	•	•	•	•
•			•	•		•
•					•	•

KOP-FLEX® & JAURE® COUPLINGS MANUFACTURING PROGRAM



PRODUCT BRAND NAME	MAX-C® COUPLING	HIGH PERFORMANCE PROGRAM			KOP-FLEX® GREASE	SERVICE
TYPE & DESCRIPTION	HEAVY DUTY ELASTIC COUPLING	GEAR	DISC	DIAPHRAGM	GEAR COUPLING / SPINDLE GREASE	REPAIR & MAINTENANCE PROGRAM
INDUSTRY APPLICATION						
Metals & Heavy duty	•				•	•
Minerals & Mills	•				•	•
Crane & Hoisting	•				•	•
Pulp & Paper					•	•
Petrochemical / Oil & Gas	•	•	•	•	•	•
Cooling Towers					•	•
Machine Tools					•	•
Marine	•	•	•	•	•	•
Wind Turbines	•				•	•
Test Benches	•	•	•	•	•	•
Railway	•	•			•	•

GLOBAL PRESENCE

MANUFACTURING FACILITIES & ENGINEERING CENTERS



JAURE® & KOP-FLEX® engineered couplings are designed, manufactured, sold and serviced worldwide, with service provided from specification right through to installation.

A dedicated global sales and service team assists you to find the best choice and manage all your coupling needs.

Facilities around the globe are state of the art, with access to a large and experienced engineering staff focused on providing solutions for our customers' requirements.



Zizurkil, Spain



Pune, India



Nove Mesto, Slovakia



Zhangzhou, China



Baltimore, Maryland - USA



Florence, Kentucky - USA



Apocadaca, México

JAURE®

Regal Beloit Spain S.A

Ernio bidea, s/n
20159 ZIZURKIL
(Gipuzkoa) SPAIN

Phone: +34 943 69 00 54

Fax: +34 943 69 02 95

Email: jaure.ptsolutions@regalbeloit.com

www.regalbeloit.com

APPLICATION CONSIDERATIONS

The proper selection and application of power transmission products and components, including the related area of product safety, is the responsibility of the customer. Operating and performance requirements and potential associated issues will vary appreciably depending upon the use and application of such products and components. The scope of the technical and application information included in this publication is necessarily limited. Unusual operating environments and conditions, lubrication requirements, loading supports, and other factors can materially affect the application and operating results of the products and components and the customer should carefully review its requirements. Any technical advice or review furnished by Regal Beloit America, Inc. and/or its affiliates ("Regal") with respect to the use of products and components is given in good faith and without charge, and Regal assumes no obligation or liability for the advice given, or results obtained, all such advice and review being given and accepted at customer's risk.

For a copy of our Standard Terms and Conditions of Sale, please visit <http://www.regalbeloit.com> (please see link at bottom of page to "Standard Terms and Conditions of Sale"). These terms and conditions of sale, disclaimers and limitations of liability apply to any person who may buy, acquire or use a Regal product referred to herein, including any person who buys from a licensed distributor of these branded products.

Regal, Barflex, Compolink, Ixilflex, Jauflex, Jaure, Kop-Flex, Lamidisc and Max-C are trademarks of Regal Beloit Corporation or one of its affiliated companies.

2016,2018 Regal Beloit Corporation, All Rights Reserved. MCB18044E • Form# 9457E

